



L A S E R C U T T I N G M A C H I N E

AXEL SERIES



A cost-effective laser processing center

The ability to react and provide a fast response to opportunities has become increasingly necessary in today's competitive marketplace. To obtain maximum flexibility, the application of new technologies is regarded as one of the most effective production resources.

Backed by years of technical knowledge and experience in sheet metal fabrication and laser cutting, LVD Strippit offers the Axel high-speed laser processing center as part of its range of precision laser cutting machines.

Becoming competitive also depends on the cost-effectiveness of new equipment placed on-line. The integration of automatic load/unload allows unattended production, permitting the operator to perform other tasks.

The Axel offers reliable, consistent laser cutting. Each component of the machine has been carefully chosen to guarantee the highest quality results and the best productivity.



Axel 3015 S

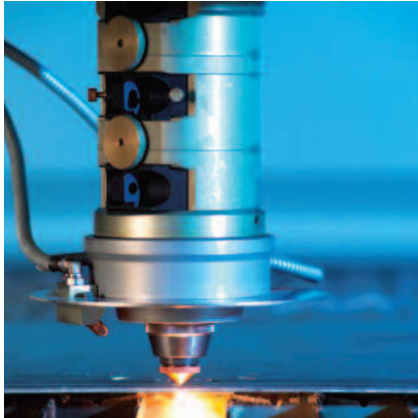


Axel 3015 L2

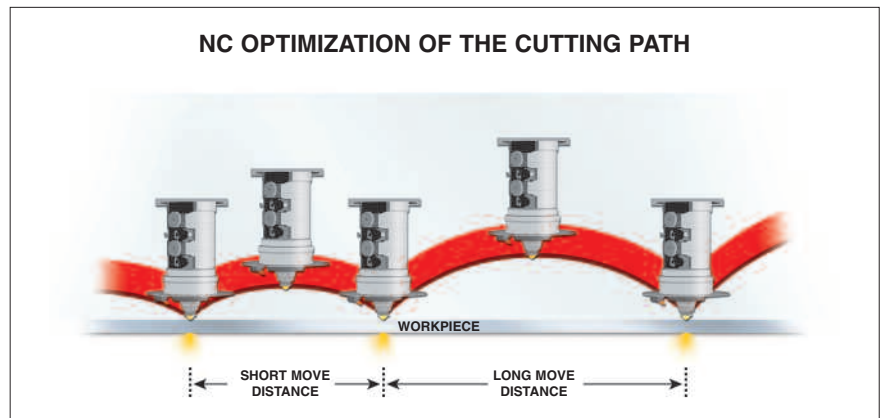
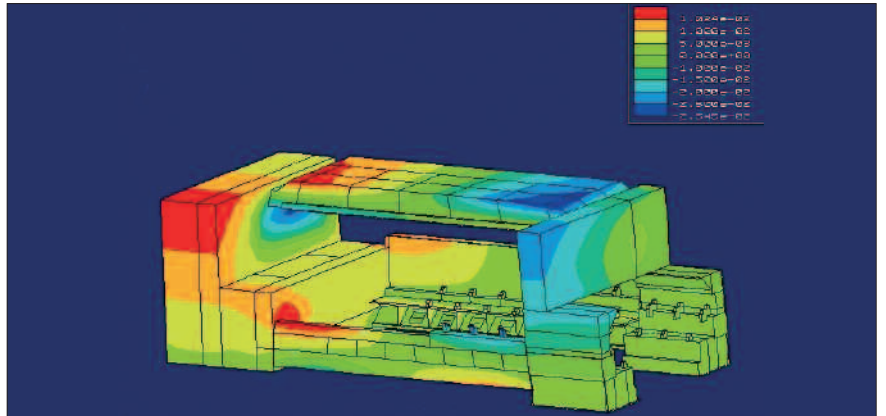
Axel

- Compact flying optics laser profiling machine with a constant beam length system
- 5' x 10' (1500 x 3000 mm) work table area
- Incorporates automatic shuttle tables or a fully integrated and programmable load/unload system
- Equipped with a single system package from GE Fanuc comprised of laser source, control, motors and AC drive amplifiers
- Offers the flexibility of 2500 W, 4000 W or 5000 W laser source
- The user-friendly CADMAN-L 3D software package (optional) offers even higher flexibility and productivity
- Conforms to all current safety standards
- The Axel laser cutting machine provides the following advantages:
 - high productivity
 - high flexibility
 - fast cut-to-cut workpiece changeover
 - improved accuracy
 - high reliability
 - simplified operating procedure
 - low maintenance and operation costs
 - compact design

- Crash protection: Cutting head with built-in safety system to protect the cutting head in case of collision with the workpiece



- The frame is designed as a very rigid closed box. Maximum deformation at the highest acceleration is limited to 0.0007" (0,02 mm).



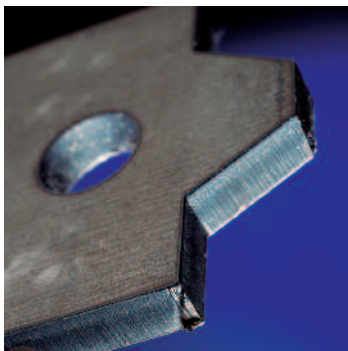
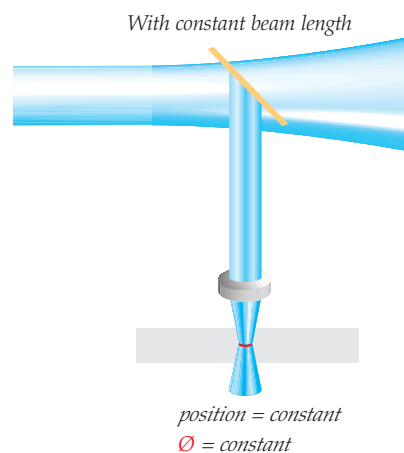
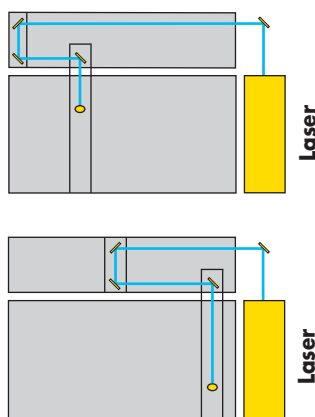
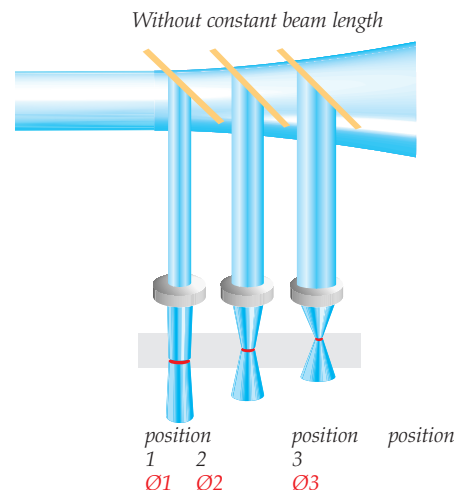
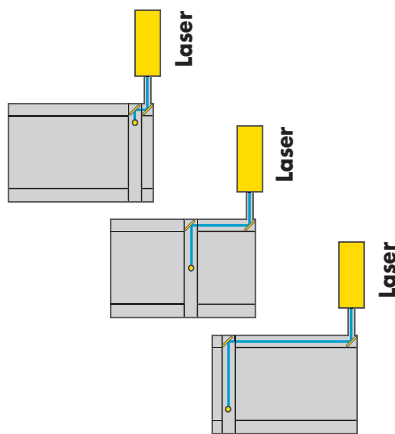
- Quick change lens (5", 7.5" and 10"): equipped as standard with a cassette system for quick replacement of the water-cooled focusing lens
- Laser Eye: optical sensor referencing system allows automatic and non-contact sheet referencing
- Capacitive height sensing built into the cutting head:
 - maintains a constant distance between the head and the material being processed
 - adjusts to any undulations in the plate

- NC Optimization maximizes machine productivity without operator intervention by automatically determining the cutting head motion based on travel distance.
- The Axel equipped with linear motor and 5 kW resonator achieves cutting speeds up to 1575 IPM (40 m/min) for maximum output.

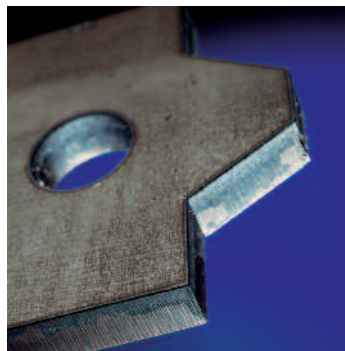


Outstanding edge quality

- Constant beam length system keeps the diameter of the laser beam constant, always maintaining the focal point at the same position in the material.
- This results in:
 - higher cutting speeds being maintained over the complete working area
 - superior cutting quality over the complete working area
- Edge function for cutting sharp corners particularly in thicker plate
- Start-up function for optimal lead ins
- Total power control: automatic adjustment of laser power as a function of speed change
- Pulse function for cutting high quality small holes
- Numerous other processing technologies: engraving, marking, cutting of coated material, etc.
- Back reflection control: important while cutting aluminium, copper and other reflective materials
- Process Control (optional): control of the piercing and cutting process



Without edge function



With edge function

Integrated GE Fanuc laser package

All LVD Strippit lasers systems feature the GE Fanuc laser package.

GE Fanuc, global market leader in CNCs and drive mechanisms, is a major supplier of laser systems with over 7500 units sold. The company produces a custom package solution for LVD Strippit that delivers important benefits for laser systems users.

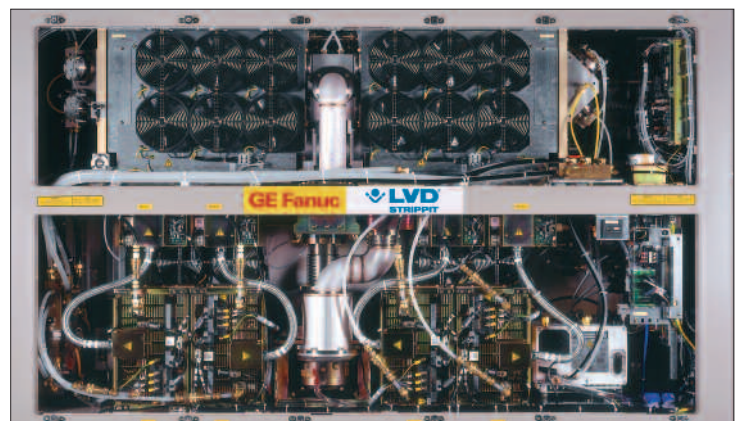
The GE Fanuc laser package includes a laser, PC-based controller, and digital servo drives. It gives the user full control over the cutting process with the most reliable technology in the world. End-users benefit from integral interfaces, easy installation and start-up, and a host of additional functions that make laser processing more economical.

Axel systems use a 2.5, 4 or 5 kW fast axial flow high power CO₂ laser with high frequency (HF) excitation. High frequency resonators are universally accepted as extremely reliable and maintenance friendly. There is no need to change electrodes due to erosion or because of contamination. These lasers also provide extremely economical use of laser gas (10-20 l/H). The Axel resonators feature the latest radio frequency excitation technology for high reliability.

The integrated system offers other unique features that enhance laser system performance.

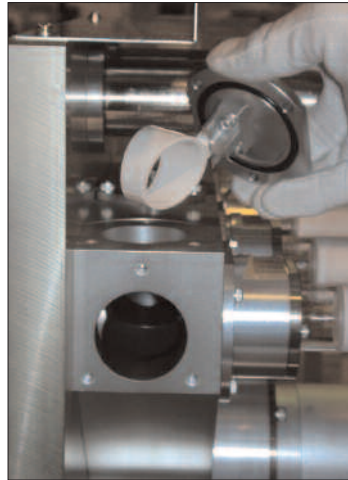


GE Fanuc 160i-L control

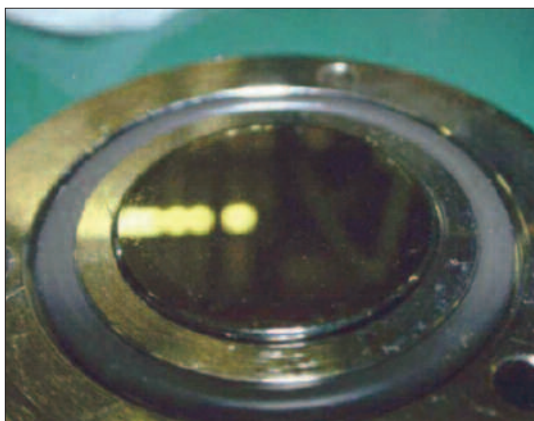
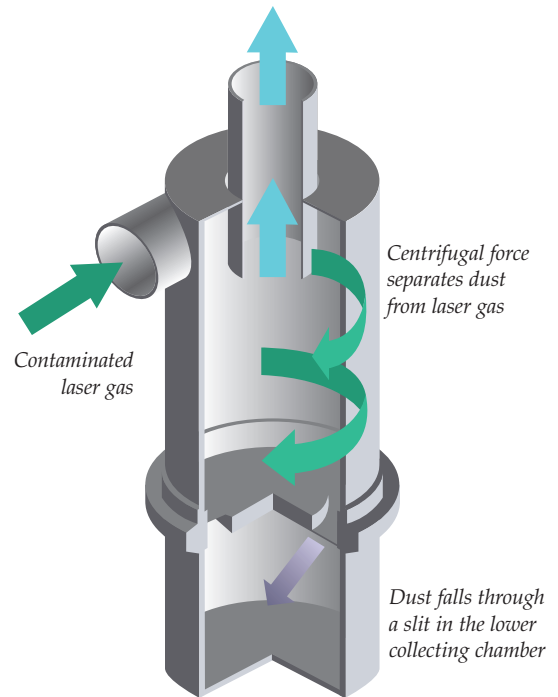


GE Fanuc RF resonator

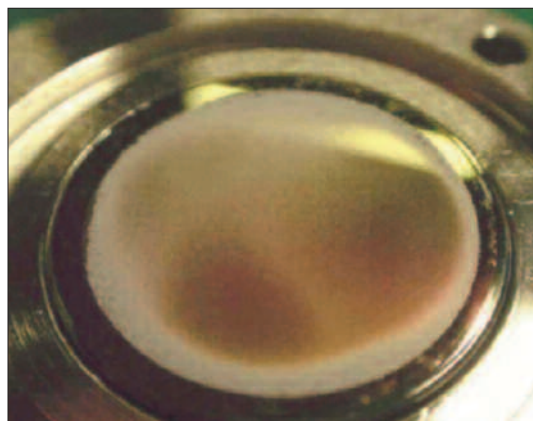
■ Photo catalytic element: Used to remove contamination from laser gas, reducing the need for mirror cleaning. The photo catalytic element employs a TiO_2 -coated ceramic ring located in the resonator. Ultraviolet rays create a photo catalytic effect, which dissociates hydrocarbons into carbon dioxide and water.



■ Cyclone cleaner unit: separates dust and laser gas by centrifugal force, keeping the cavity clean. The cyclone cleaner unit collects dust and prevents it from adhering to the mirror, reducing contamination of resonator mirrors and minimizing cleaning requirements.



The resonator mirror with a centrifugal separator.



The resonator mirror without a centrifugal separator. To prove the efficiency of the cyclone cleaner unit, the laser gas was contaminated with 5 gr. of glass powder.

CONFIGURATIONS



Axel 3015 S

Axel is designed with a modular construction. The Axel 3015 S comes equipped with shuttle tables. This design allows one table to be loaded while the machine is cutting on the other table, maximizing uptime. Table change in only 12 sec. Due to rigid construction, no special floor preparation is needed.



Axel 3015 L1

Axel L features a fully integrated load/unload system that permits unattended production, freeing the operator to perform other tasks.

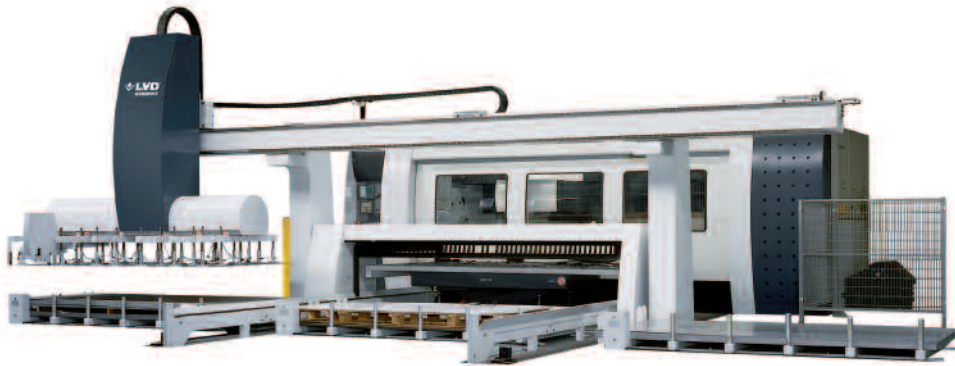
The load/unload system is designed for maximum efficiency in material handling, while minimizing the required floorspace.

The Axel system also unloads parts in an optimal way. The speed of the unloading system can be controlled through the CNC according to the weight of the material or the size of the parts being off-loaded, to ensure that the unloaded parts stack smoothly.



Axel 3015 L2

Axel can be configured with 1, 2 or 3 loading stations. These extra station(s) improve the flexibility of the system without investing in a storage tower.



Axel 3015 L3

Axel L3 features three material stations and an output station for cut parts.

Taking up the same floorspace as an L3, an Axel L2.2 is equipped with two loading stations and two output stations for finished parts.



Axel 3015 LT

Axel LT features storage towers that work in concert with the material handling system, providing full capabilities for loading, unloading and storage.

Material enters the warehouse through a de-palletizing station that facilitates the removal of steel banding and other shipping materials. A transport system delivers material to the tower.

Each piece of the system is controlled through a single CNC control for easy and efficient monitoring and programming.

Fully integrated programming system

The Axel is available with CADMAN-L 3D, a fully integrated, highly automated CAD/CAM programming system for the design, unfolding, importing, nesting and cutting of laser parts and sheets.

This optional software package offers precise importing and unfolding of 3D models, importing of 2D files and a powerful built-in CAD system for part design.

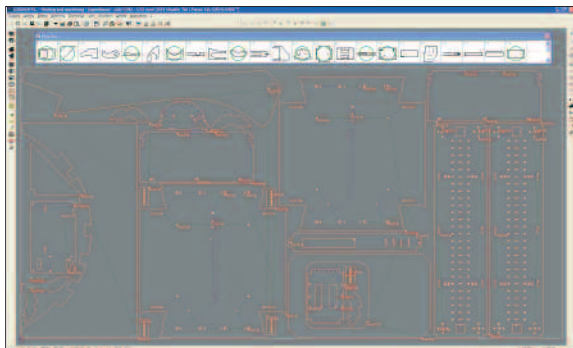
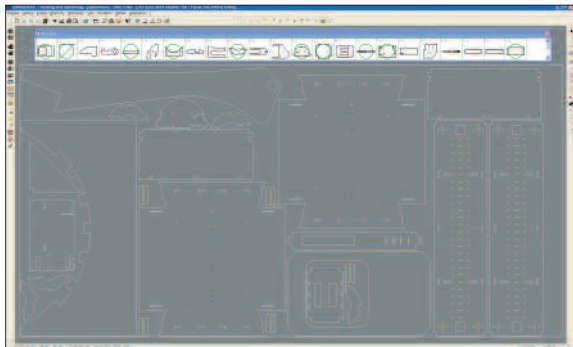
CADMAN-L 3D is completely configurable for manual or automatic programming featuring:

- Parametric lead-ins and lead outs for contours, bridges, loops and micro-joints
- Automatic control of cutting and nesting parameters by material type and thickness
- Advanced common-line cutting

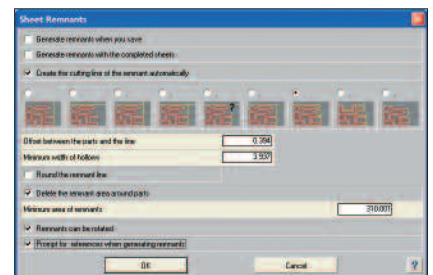
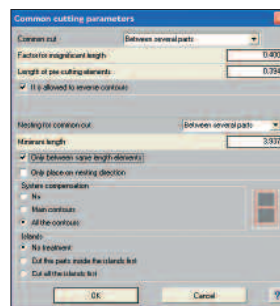
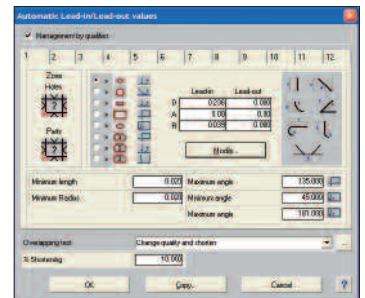
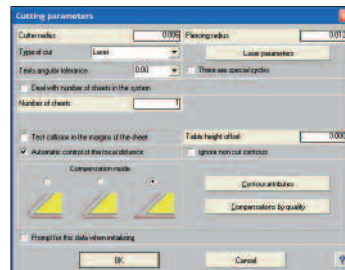
- Powerful nesting and sequencing for maximum efficiency
- Skeleton cutting and full utilization of sheet remnants
- Program optimization, verification and simulation

CADMAN-L 3D is built upon a powerful database and can be connected directly to the Axel laser machine, as well as integrated with a shop floor management system.

CADMAN-L 3D is part of the integrated family of CADMAN® programming software which streamlines the fabricating process by providing a seamlessly integrated solution from concept to finished part.



Nesting



Advanced common line cutting; flexible lead-in/lead outs; skeleton cutting and utilization of sheet remnants.

Machine

Maximum Sheet Size	5' x 10' (1500 x 3000 mm)
X-Axis Travel	124" (3150 mm)
Y-Axis Travel	62.8" (1600 mm)
Z-Axis Travel	3.9" (100 mm)
Maximum Positioning Speeds	
X-Axis	4724 IPM (120 m/min)
Y-Axis	4724 IPM (120 m/min)
X-Y Simultaneous	6654 IPM (169 m/min)
Z-Axis	590 IPM (15 m/min)
Repetitive Accuracy	± 0.0008" (± 0,025 mm)
Positioning Accuracy*	± 0.002 IPM (± 0,05 mm/m)

Laser

Type	GE-Fanuc HF excited fast axial flow CO ₂ laser
Laser Power (± 2%)	2500 W, 4000 W or 5000 W
Power Stability	± 2%
Wave Length	10,6 µm
Mode	D
Divergence	< 2 mrad
Directional Stability	< 0,2 mrad
Pulses	up to 2 kHz
Polarization	circular

Consumption

Laser Gas		10 l/hour (2,5 - 4 kW)
		20 l/hour (5 kW)
Cutting Gases	O ₂ (average)	1 m ³ /hour
Compressed Air		40 m ³ /hour

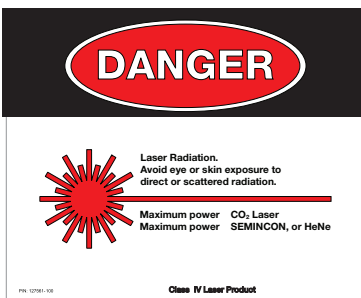
General Specifications

Overall Dimensions	Axel 3015 L	L	433" (11000 mm)
		W	292" (7400 mm)
		H	158" (4000 mm)
	Axel 3015 S	L	453" (11000 mm)
		W	292" (7400 mm)
		H	158" (4000 mm)

Material Capacities

	2500 W	4000 W	5000 W
Max. Sheet Thickness:			
Steel	5/8" (16 mm)	3/4" (20 mm)	1" (25 mm)
Stainless steel (N ₂)	3/8" (10 mm)	9/16" (10 mm)	9/16" (15 mm)
Aluminium	3/16" (5 mm)	3/8" (5 mm)	1/2" (12 mm)

* Achievable workpiece accuracy depends on type of workpiece, pre-treatment and sheet size, as well as other variables.



HEADQUARTERS

Strippit Inc.
12975 Clarence Center Rd.
USA-AKRON NY 14001
UNITED STATES
Tel.: + 1 716 5424511
Fax: + 1 716 5425957
e-mail: info@strippit.com

LVD Company n.v.
 Nijverheidslaan 2
 B-8560 GULLEGEM
 Belgium
 Tel.: + 32 56 43 05 11
 Fax: + 32 56 43 25 00
 e-mail: info@lvd.be

SUBSIDIARIES *

LVD BeNeLux n.v.
 Hondschotestraat 112
 B-8560 GULLEGEM
 BELGIUM
 Tel.: + 32 56 43 08 50
 Fax: + 32 56 43 25 20
 e-mail: benelux@lvd.be

LVD GmbH
 Europastrasse 3/1
 D-77933 LAHR
 GERMANY
 Tel.: + 49 7821 922620
 Fax: + 49 7821 9226225
 e-mail: info@lvd-gmbh.de
 LVD s.a.
 ZI du Plouich -
 rue du Commerce B.P. 131
 F-59590 RAISMES
 FRANCE
 Tel.: + 33 327 38 01 38
 Fax: + 33 327 38 01 36
 e-mail: info@lvdsa.fr

LVD Italia s.r.l.
 Via Baganzola 29
 I-43100 PARMA
 ITALY
 Tel.: + 39 0521 290188
 Fax: + 39 0521 291586
 e-mail: info@lvd.it

LVD Limited
 Unit 3
 Wildmere Road
 UK-BANBURY, OXFORDSHIRE
 OX16 3JU
 UNITED KINGDOM
 Tel.: + 44 1295 676 800
 Fax: + 44 1295 262 980
 e-mail: mailbox@lvduuk.com

LVD Swe-Nor A/S
 Postboks 78 Ellingsrudåsen
 N-1006 OSLO
 NORWAY
 Tel.: + 47 22 300240
 Fax: + 47 22 308517
 SWEDEN
 Tel.: + 46 300 74 740
 Fax: + 46 300 74 754
 e-mail: lvd@lvdsn.no

Hämeskone Oy
 Kivipyykintie 2
 SF-01260 VANTAA 26
 FINLAND
 Tel.: + 358 9 8765522
 Fax: + 358 9 8765571
 e-mail: hameskone@hameskone.fi

LVD GR E.P.E.
 Metamorfoseos Street 20B
 GR-38221 VOLOS
 GREECE
 Tel.: + 30 24210 21295
 Fax: + 30 24210 21297
 e-mail: lvd@otenet.gr

LVD-Polska Sp. z.o.o.
 Ul. Wyspianskiego 45
 PL-47-206 KEDZIERZYN-KOZLE
 POLAND
 Tel.: + 48 77 406 12 73
 Fax: + 48 77 483 06 12
 e-mail: info@lvd.pl

LVD SIT d.o.o.
 Bevkova 7
 SLO-5271 VIPAVA
 SLOVENIA
 Tel./Fax: + 386 53687201
 e-mail: igor.badalic@siol.net

LVD S²
 Ul. Postova
 SQ-982 01 Tornala
 SLOVAKIA
 Tel.: + 421 47 5523607
 Fax: + 421 47 5522969
 e-mail: szaszi@lvds2.sk

LVD Napomar s.a.
 B-dul Muncii Nr. 14
 RO-3400 CLUJ NAPOCA
 ROMANIA
 Tel.: +40 264 415008
 Fax: +40 264 415010
 e-mail: merlas@lvdnapomar.ro

LVD do Brasil Ltda.
 Rua Felisberto Petroni 71
 Vila Viotto
 CEP 13,209-570 JUNDIAI-SP
 BRAZIL
 Tel.: + 55 11 4522 2221
 Fax: + 55 11 4521 3551
 e-mail: global.lvd@terra.com.br

P.T. LVD Center
 Mangga Dua Plaza
 Block N/37
 RI-JAKARTA PUSAT 10730
 INDONESIA
 Tel.: + 62 21 6120771
 Fax: + 62 21 6018817
 e-mail: lvdindo@bit.net.id

LVD (Malaysia) Sdn. Bhd
 14, Jalan Kartunis U1/47
 Section U1,
 Temasya Industrial Park
 MAL-40150 SHAH ALAM
 Selangor Darul Ehsan
 MALAYSIA
 Tel.: + 60 3 556 95 861
 Fax: + 60 3 556 95 862
 e-mail: lvdm@tm.net.my

LVD Company Ltd.
 45 Soi Phattanawet
 Sukhumvit soi 71
 Prakanong
 T-BANGKOK 10110
 THAILAND
 Tel.: + 66 2 381 1556
 Fax: + 66 2 381 1709
 e-mail: lvdt@ksc.th.com

LVD-Strippit (Shanghai) Co., Ltd
 Room 601, Silver Tower
 933 Zhongshan West Rd
 200051 SHANGHAI
 CHINA
 Tel.: + 86 21 51709170
 Fax: + 86 21 51113532
 e-mail: xflvd@hotmail.com