

Machine standard specifications

Item		C300H-X	C300H-Z	C300H-XZ
Linear scale		X-axis	Z-axis	X-axis and Z-axis
Machining capacity	Swing over bed	260 mm		
	Spindle center height from X-slide surface	50 mm		
	Distance between spindle end and X-slide edge	Max 423 to Min 123 mm		
Spindle	Max. spindle speed	6,000 min ⁻¹		
	Spindle end face configuration	ϕ140 mm flat		
	Max. bar stock diameter	ϕ38 mm		
	Chuck size	6 inch		
Tool post	Type	Gang-type tool post (with T-groove)		
	X-axis stroke		300 mm	
	Z-axis stroke		300 mm	
	Rapid traverse speed	X-axis	24 m/min	
		Z-axis	24 m/min	
	Tool size		16 mm square	
Motor	Spindle		5.5/7.5 kW	
	X axis		1.2 kW	
	Z axis		1.2 kW	
	Coolant pump		180 W	
	Spindle cooling pump		100 W	
	Lubricating oil tank		1.8 L	
Tank capacity	Spindle cooling oil tank		8 L	
	Coolant tank		130 L	
	Width x Depth x Height		1,610 mm x 1,535 mm x 1,600 mm	
Dimension	Weight		1,900 kg	

NC Standard Specifications

Item	C300H-X	C300H-Z	C300H-XZ
NC unit	FANUC OiMate-TD		
Display unit	8.4" color LCD		
Least input increment	0.0001 mm (X axis: diameter designation)		
Feedrate command	mm/rev, mm/min		
Command input method	Absolute/Incremental		
Interpolation	Linear, Circular		
Miscellaneous function M	M3 digits		
Spindle function S	S4 digits (Direct command)		
Tool function T	T4 digits		
Tool compensation memory	64 pairs		
Part program storage size	512 kbyte		
Feedrate override	0 to 150 % (By 10 % steps)		
Optional block skip	1		
Backlash compensation			
Program number search	O4 digits		
Sequence number search	N5 digits		
Canned cycle			
English display			
Cutter and tool nose radius compensation, Tool geometry offset, Tool wear offset, Custom macro, Multiple repetitive cycles, Background editing, Direct drawing dimension programming, Inch/metric conversion, Run-hour & parts count display, Spindle speed fluctuation detection			

PRECISION TSUGAMI

TSUGAMI

CNC High Precision Automatic Lathe

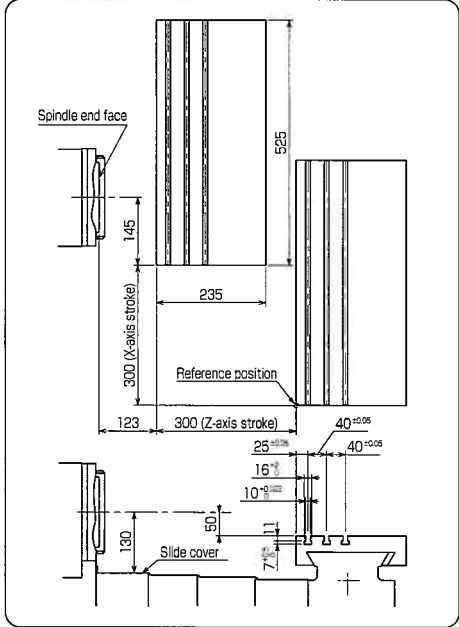
C300H



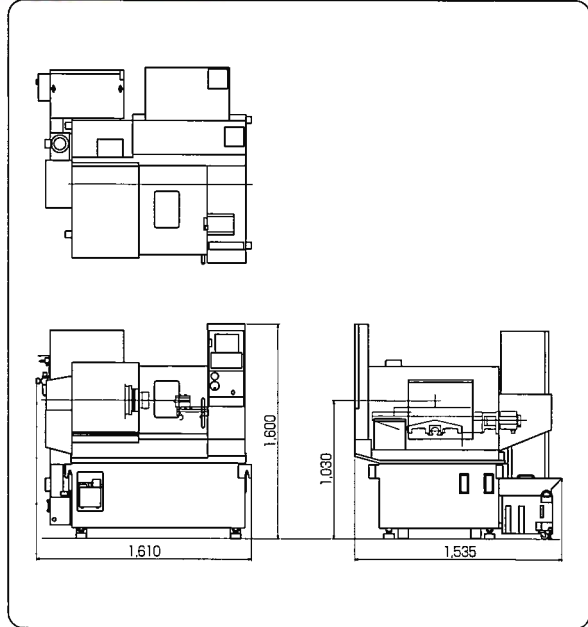
Standard Accessories

Tool holder (1)
Tool holder (2)
Transit clamps
Spindle cooling unit
Height gauge

Tooling Zone



Appearance



Options

Air chuck
Collet chuck
Hydraulic unit
Work conveyor
Hydraulic cylinder
Hydraulic chuck
Illumination light
Automatic fire extinguisher
Spindle air blow
Tool post air blow
Pneumatic unit for chuck

Gang-Type tool Concept, most suitable for high precision machining.

Accommodate both bar and chucker Machine with linear scale

C300H-X (with X-axis linear scale)
C300H-Z (with Z-axis linear scale)
C300H-XZ (with X-axis linear scale and Z-axis linear scale)

Export permission by the Japanese Government may be required for exporting our products in accordance with the Foreign Exchange and Foreign Trade Law. Please contact our sales office before exporting our products.

The specifications of this catalogue are subject to change without prior notice.

TSUGAMI CORPORATION

12-20, TOMIZAWA-CHO, NIHONBASHI,
CHUO-KU, TOKYO 103-0006, JAPAN
Phone : 03-3808-1172
Facsimile : 03-3808-1175



Gang-Type tool Concept,
most suitable for high precision machining.
Flexibly correspond to both bar and
chucker according to the workpieces.

Signal indicator (option)

Illumination light (option)

Spindle cooling unit



Machine height
1,285 mm
Easy supervision
of factory

Powerful and high precision spindle (5.5/7.5 kW)

- Built-in motor spindle minimizes vibration and improves surface finishes.
- Standard-equipped spindle cooling unit reduces thermal displacement.
- Improving surface roughness, prolonging tool life
- Cooling by the oil cooler

High-rigidity Slide

- High rigidity sliding guide ways improve machining accuracy and absorb heavy cutting loads.

Linear scale

- It is possible to reduce the impact of the thermal displacement to the machine and improve machining accuracy.

A Variety of Tooling

- Tooling system selections are available for both bar and chucker to meet a wide variety of workpieces.

Automation

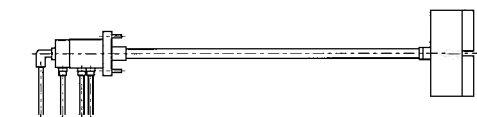
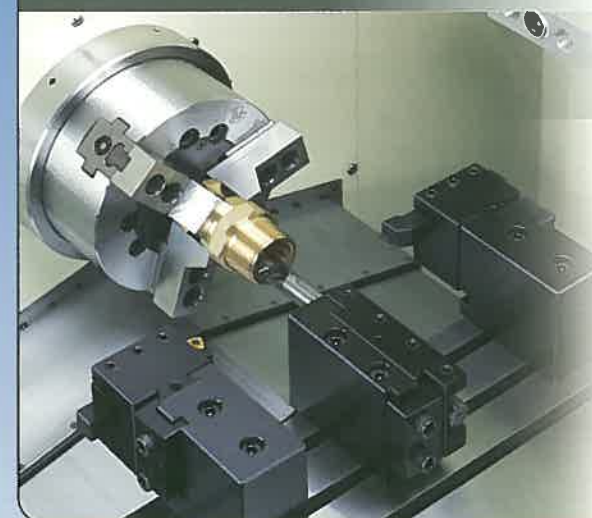
- The loader is easy to be installed since height from the spindle center to the top of the cover is 255 mm. It is also possible to mount through-machine type loader.
- Oi Mate-TD is adopted for NC and it can control the loader together.

Improvement of operability

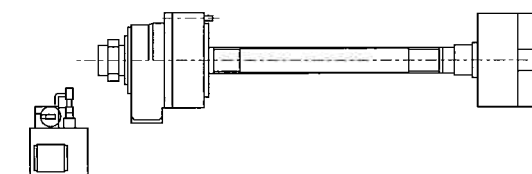
- Extending the door opening width to 470 mm to improve the operability.
- Above the spindle, energy-saving LED internal illumination light is provided as option.

Accommodate both bar work and chuck work

Chuck work

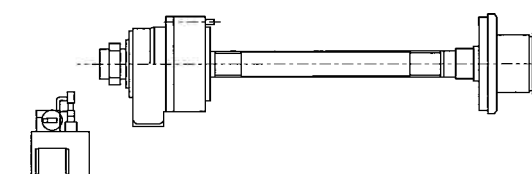
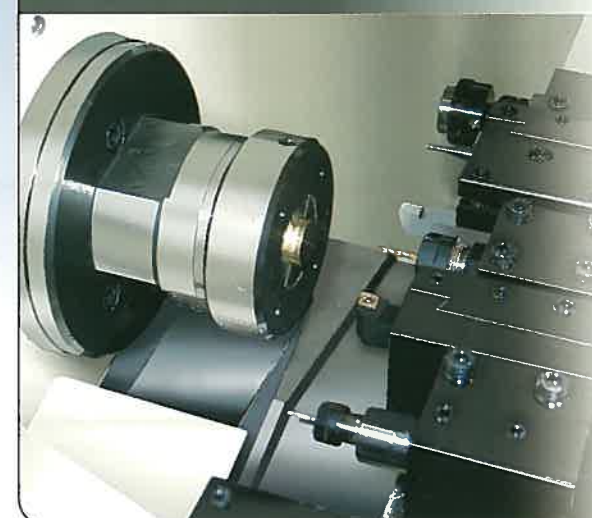


Built-in air cylinder type air chuck

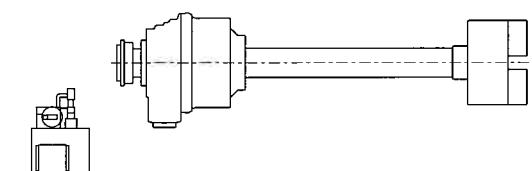


Hydraulic chuck + Hydraulic cylinder +
Hydraulic unit

Bar work



Collet chuck + Hydraulic cylinder +
Hydraulic unit



3-jaw chuck + Hydraulic cylinder +
Hydraulic unit